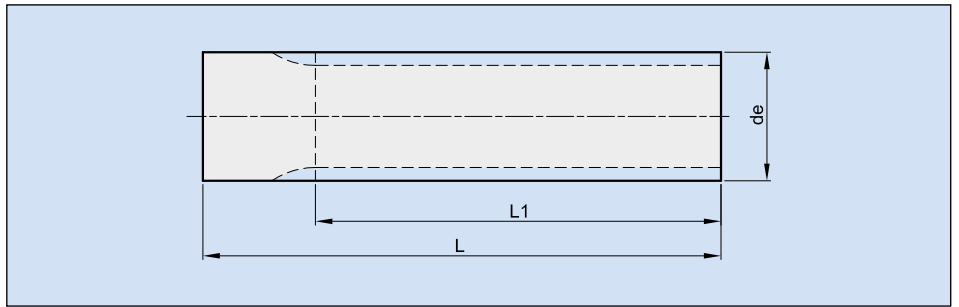


Zahnriemenwellen AT



Artikel-Nr. Ketten Fuchs	Zähne- zahl	Abmessungen in mm			Werk- stoff
		de	L1	L	
AT5-12	12	17,85	140,0	140,0	Alu
AT5-13	13	19,45	140,0	140,0	Alu
AT5-14	14	21,05	140,0	140,0	Alu
AT5-15	15	22,65	140,0	140,0	Alu
AT5-16	16	24,20	140,0	140,0	Alu
AT5-18	18	27,40	140,0	140,0	Alu
AT5-19	19	29,00	140,0	140,0	Alu
AT5-20	20	30,60	160,0	160,0	Alu
AT5-21	21	32,30	160,0	160,0	Alu
AT5-22	22	33,85	160,0	160,0	Alu
AT5-23	23	35,45	160,0	160,0	Alu
AT5-24	24	37,00	160,0	160,0	Alu
AT5-25	25	38,55	160,0	160,0	Alu
AT5-26	26	40,20	160,0	160,0	Alu
AT5-28	28	43,25	160,0	160,0	Alu
AT5-30	30	46,55	160,0	160,0	Alu
AT5-32	32	49,70	160,0	160,0	Alu
AT5-34	34	52,85	160,0	160,0	Alu
AT5-36	36	56,05	160,0	160,0	Alu
AT5-38	38	59,25	160,0	160,0	Alu
AT5-40	40	62,45	160,0	160,0	Alu
AT5-42	42	65,60	160,0	160,0	Alu
AT5-44	44	68,80	160,0	160,0	Alu
AT5-46	46	72,00	160,0	160,0	Alu
AT5-48	48	75,15	160,0	160,0	Alu
AT5-52	52	81,55	160,0	160,0	Alu
AT5-56	56	87,90	160,0	160,0	Alu
AT5-60	60	94,25	160,0	160,0	Alu
AT5-64	64	100,65	160,0	160,0	Alu
AT5-72	72	113,35	160,0	160,0	Alu

Artikel-Nr. Ketten Fuchs	Zähne- zahl	Abmessungen in mm			Werk- stoff
		de	L1	L	
AT10-15	15	45,90	160,0	160,0	Alu
AT10-16	16	49,14	160,0	160,0	Alu
AT10-18	18	55,45	160,0	160,0	Alu
AT10-19	19	58,65	160,0	160,0	Alu
AT10-20	20	61,80	160,0	160,0	Alu
AT10-21	21	65,00	160,0	160,0	Alu
AT10-22	22	68,20	160,0	160,0	Alu
AT10-23	23	71,35	160,0	160,0	Alu
AT10-24	24	74,55	160,0	160,0	Alu
AT10-25	25	77,75	160,0	160,0	Alu
AT10-26	26	80,90	160,0	160,0	Alu
AT10-28	28	87,25	160,0	160,0	Alu
AT10-30	30	93,65	160,0	160,0	Alu
AT10-32	32	100,00	160,0	160,0	Alu
AT10-34	34	106,40	160,0	160,0	Alu
AT10-36	36	112,75	160,0	160,0	Alu
AT10-38	38	119,10	160,0	160,0	Alu
AT10-40	40	125,45	160,0	160,0	Alu
AT10-42	42	131,85	160,0	160,0	Alu
AT10-44	44	138,20	160,0	160,0	Alu
AT10-46	46	144,55	160,0	160,0	Alu
AT10-48	48	150,95	160,0	160,0	Alu
AT10-52	52	163,65	160,0	160,0	Alu
AT10-56	56	176,40	160,0	160,0	Alu
AT10-60	60	189,15	160,0	160,0	Alu